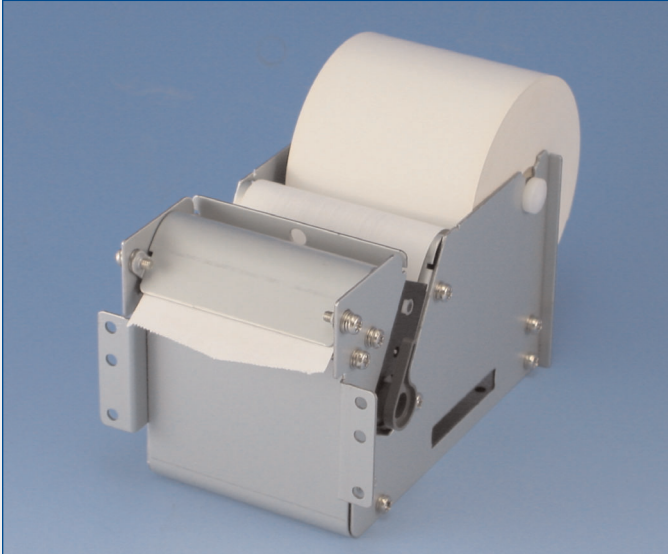


NP-211

2 inch Thermal Kiosk Printer w/ Semi-Automatic Cutter

NP-211



The NP-211 is a unique product designed for cost-conscious applications where maintenance-free operation is invaluable.

The innovative design of the semi-automatic cutter utilizes the force from the user removing the receipt to separate the receipt from the rest of the paper roll.

This not only results in lower power consumption, but more importantly limits the number of moving parts - increasing the service life and maintenance interval of the printer.

FEATURES

- Semi-Automatic Cutter
- Compact Footprint
- Semi-Auto Paper Loading
- Extremely Economical

SPECIFICATIONS

Paper Width	58 mm
Paper Roll Diameter (max)	70 mm
Print Width	54 mm
Resolution	203 dpi (8 dots/mm)
Print Speed	50 mm/sec
Interface	Serial, USB
Barcodes	UPC-A, UPC-E, EAN(JAN-13) CODE39, ITF, CODABAR, CODE128
Input Buffer	10K Bytes
Operating Voltage	8 - 13V DC +/- 5%
External Dimensions (W x D x H)	84 x 115 x 77.5 mm
Weight	1.43 lbs
Reliability	
Head (wear)	50 km
Cutter	N/A

All specifications subject to change without notice.

Manufactured by Nippon Primex All specifications subject to change without notice